



**K2**<sup>®</sup>  
**IMPEX**

MUMBAI • NEW DELHI



**GALGO**<sup>®</sup>

FLOOR DECOR SOLUTIONS

S.P.C. | LAMINATE | VINYL FLOORINGS



**RIGID CORE  
VINYL (SPC)  
FLOORING**

**THICKNESS  
4.0mm | 5.0mm**

# SPC FLOORING

4.0mm - 4501



== FLOOR DECOR SOLUTIONS ==

S.P.C. | LAMINATE | VINYL FLOORINGS

# SPC FLOORING

4.0mm - 4502



— FLOOR DECOR SOLUTIONS —

S.P.C. | LAMINATE | VINYL FLOORINGS

# SPC FLOORING

4.0mm - 4503



— FLOOR DECOR SOLUTIONS —

S.P.C. | LAMINATE | VINYL FLOORINGS

# SPC FLOORING

4.0mm - 4504



— FLOOR DECOR SOLUTIONS —

S.P.C. | LAMINATE | VINYL FLOORINGS

# SPC FLOORING

4.0mm - 4505



== FLOOR DECOR SOLUTIONS ==

S.P.C. | LAMINATE | VINYL FLOORINGS

# SPC FLOORING

4.0mm - 4506



FLOOR DECOR SOLUTIONS

S.P.C. | LAMINATE | VINYL FLOORINGS

# SPC FLOORING

4.0mm - 4507



— FLOOR DECOR SOLUTIONS —

S.P.C. | LAMINATE | VINYL FLOORINGS



# SPC FLOORING

4.0mm - 4508



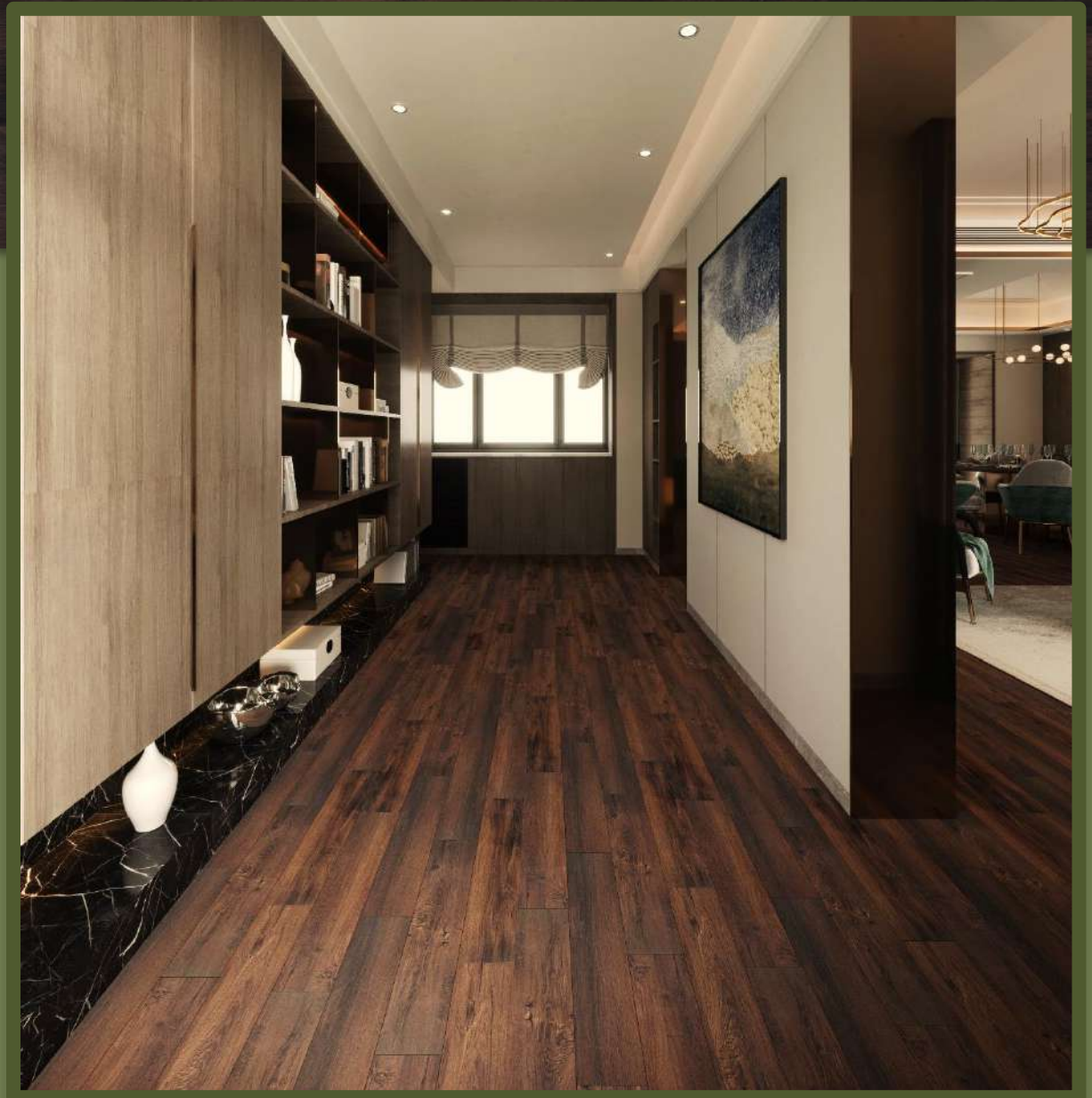
**GALGO**  <sup>®</sup>

— FLOOR DECOR SOLUTIONS —

S.P.C. | LAMINATE | VINYL FLOORINGS

# SPC FLOORING

4.0mm - 6001



®

== FLOOR DECOR SOLUTIONS ==

S.P.C. | LAMINATE | VINYL FLOORINGS

# SPC FLOORING

4.0mm - 6002

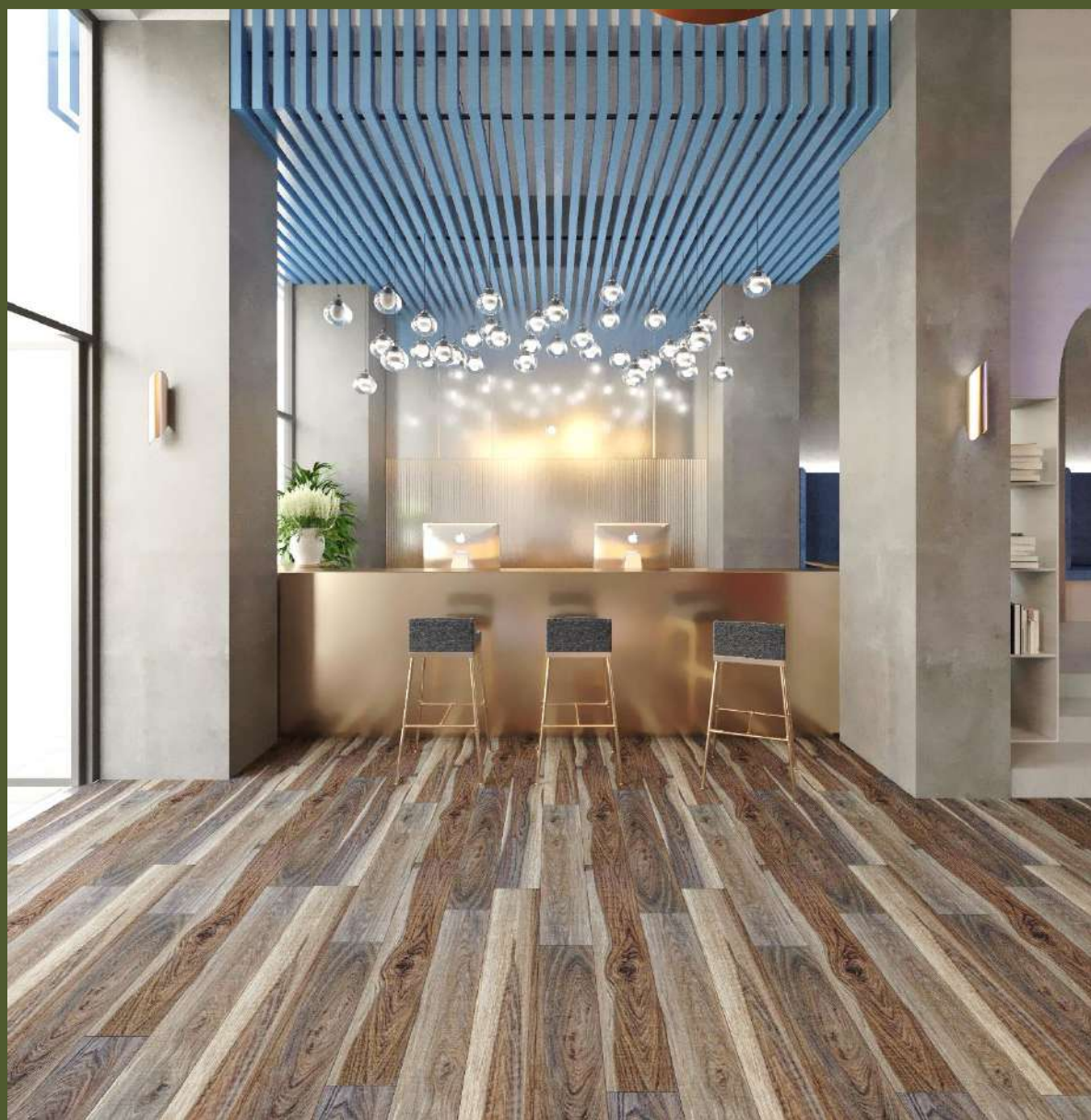


== FLOOR DECOR SOLUTIONS ==

S.P.C. | LAMINATE | VINYL FLOORINGS

# SPC FLOORING

4.0mm - 6003



— FLOOR DECOR SOLUTIONS —

S.P.C. | LAMINATE | VINYL FLOORINGS

# SPC FLOORING

4.0mm - 6004

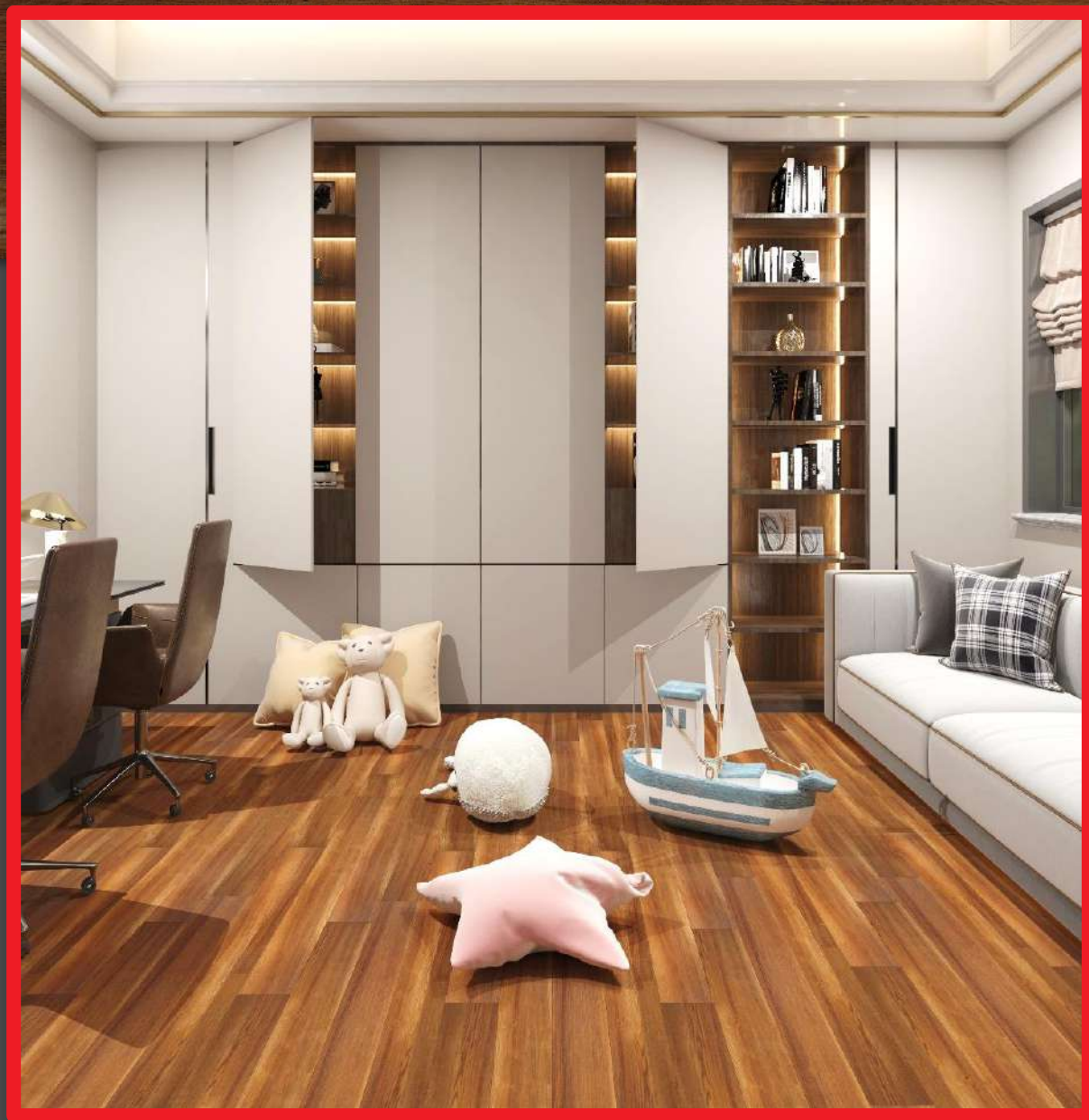


== FLOOR DECOR SOLUTIONS ==

S.P.C. | LAMINATE | VINYL FLOORINGS

# SPC FLOORING

5.0mm – 4001  
(with 1mm ixpe backing )



FLOOR DECOR SOLUTIONS

S.P.C. | LAMINATE | VINYL FLOORINGS

# SPC FLOORING

5.0mm – 4002  
(with 1mm ixpe backing )



FLOOR DECOR SOLUTIONS

S.P.C. | LAMINATE | VINYL FLOORINGS

# SPC FLOORING

5.0mm - 4003  
(with 1mm ixpe backing )



FLOOR DECOR SOLUTIONS

S.P.C. | LAMINATE | VINYL FLOORINGS



# SPC FLOORING

5.0mm – 4004  
(with 1mm ixpe backing )

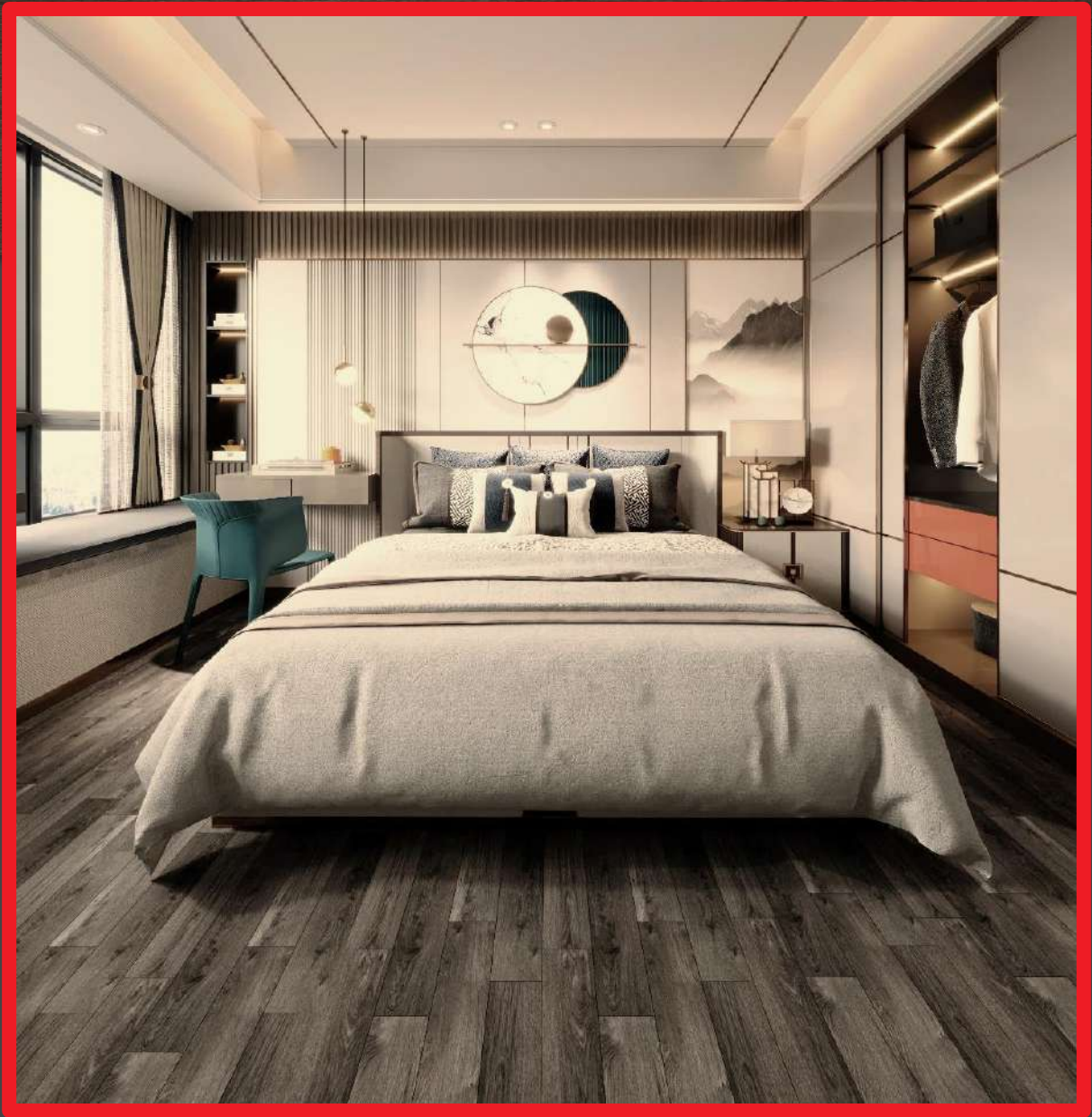


FLOOR DECOR SOLUTIONS

S.P.C. | LAMINATE | VINYL FLOORINGS

# SPC FLOORING

5.0mm – 4005  
(with 1mm ixpe backing)

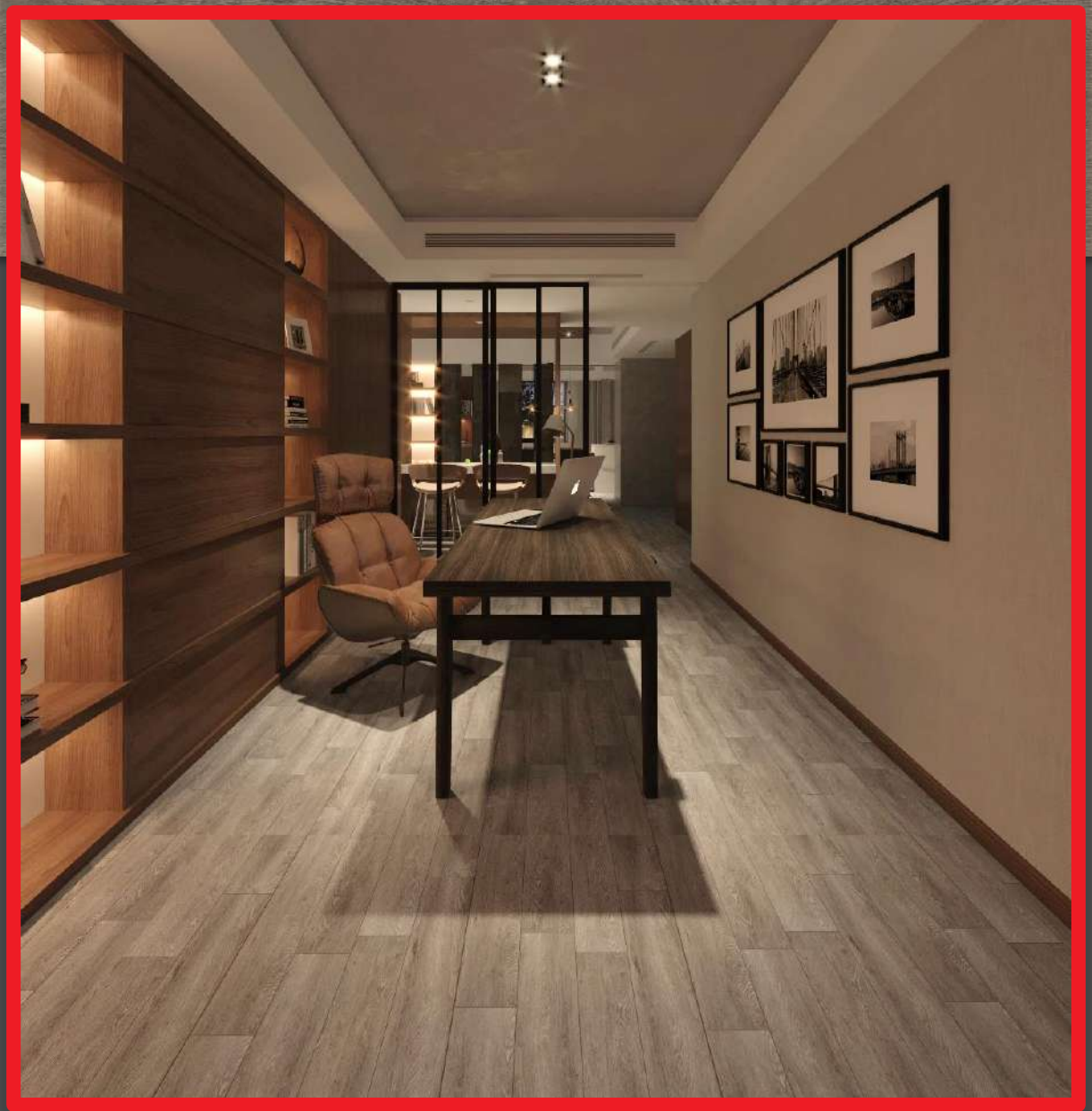


FLOOR DECOR SOLUTIONS

S.P.C. | LAMINATE | VINYL FLOORINGS

# SPC FLOORING

5.0mm – 4006  
(with 1mm ixpe backing )



FLOOR DECOR SOLUTIONS

S.P.C. | LAMINATE | VINYL FLOORINGS

# SPC FLOORING

5.0mm – 4007  
(with 1mm ixpe backing )



FLOOR DECOR SOLUTIONS

S.P.C. | LAMINATE | VINYL FLOORINGS

# SPC FLOORING

5.0mm – 4008  
(with 1mm ixpe backing )



FLOOR DECOR SOLUTIONS

S.P.C. | LAMINATE | VINYL FLOORINGS

# 4mm • PREMIUM RIGID CORE VINYL (SPC) FLOORING

## TECHNICAL DETAILS

Item		Unit	Test Methods	Spec	GLATT FLOOR SPC
Thickness		mm	ASTM F 386	±0.005"(0.13mm)	±0.005"(0.13mm)
Size	Width	mm	ASTM F 2055	184.15± 0.23	177.8± 0.23
	Length	mm		1220± 1.58	1219.2± 1.58
Squareness		mm	ASTM F 2055	Max. 0.01"(0.254mm)	≤0.2%
Gloss level		-	60° Glass Meter		5 - 8
Size	Width	%	ASTM F 2199-09	≤ 0.002"(0.165%)	≤0.1%
	Length	%		≤ 0.002"(0.165%)	≤0.1%
Size	23°C	mm			≤0.5mm
	-10°C x 2hr	mm			≤0.5mm
Core Density		-			1.95 ± 0.05
Contraction (-10°C x 2hr)	Width	%	-10°C x 2hr		≤0.2%
	Length	%			≤0.2%
Expansion (50°C, 4hr)	Width	%	50°C x 4hr		≤0.2%
	Length	%			≤0.2%
Indentation		%	ASTM F 1914	≤ 8%	≤ 5%
Resistance to Chemicals			ASTM F 925 (Resistance to Chemicals)	No more than slight change in surface dulling, surface attack, or staining	No more than slight change in surface dulling, surface attack, or staining
IIC			ASTM F 492-09	≥ 50	≥ 52
Static Load Limit			ASTM F 970	0.005"(0.13mm)	0.005"(0.13mm)

# 5mm • PREMIUM RIGID CORE VINYL (SPC) FLOORING

## TECHNICAL DETAILS

Item		Unit	Test Methods	Spec	GLATT FLOOR SPC
Thickness		mm	ASTM F 386	±0.005"(0.13mm)	±0.005"(0.13mm)
Size	Width	mm	ASTM F 2055	184.15± 0.23	177.8± 0.23
	Length	mm		1220± 1.58	1219.2± 1.58
Squareness		mm	ASTM F 2055	Max. 0.01"(0.254mm)	≤0.2%
Gloss level		-	60° Glass Meter		5 - 8
Size	Width	%	ASTM F 2199-09	≤ 0.002"(0.165%)	≤0.1%
	Length	%		≤ 0.002"(0.165%)	≤0.1%
Size	23°C	mm			≤0.5mm
	-10°C x 2hr	mm			≤0.5mm
Core Density		-			1.95± 0.05
Contraction (-10°C x 2hr)	Width	%	-10°C x 2hr		≤0.2%
	Length	%			≤0.2%
Expansion (50°C, 4hr)	Width	%	50°C x 4hr		≤0.2%
	Length	%			≤0.2%
Indentation		%	ASTM F 1914	≤ 8%	≤ 5%
Resistance to Chemicals			ASTM F 925 (Resistance to Chemicals)	No more than slight change in surface dulling, surface attack, or staining	No more than slight change in surface dulling, surface attack, or staining
IIC			ASTM F 492-09	≥ 50	≥ 52
Static Load Limit			ASTM F 970	0.005"(0.13mm)	0.005"(0.13mm)

**READ THE INSTRUCTIONS CAREFULLY BEFORE INSTALLTION OF GALGOO SPC FLOORINGS.**

- 100% FLAT FLOOR IS MUST BEFORE INSTALLTION. NO WAVENYNESS OR DUST PARTICALS SHOULD BE LEFT OF THE FLOOR. FOR BEST REASULTS INSTALL ON VIRTIFIED TILES OR MARBLE OR SPARTEX STILES. **AVOID ISSTALLTION ON CONCRETE FLOOR OR ROUGH FLOORS.**
- THERE SHOULD BE NO MOISTURE OR WATER LEFT ON THE FLOOR BEFORE INSTALLTION.
- AT LEAST 8MM EXPANSSION GAP TO BE LEFT ON ALL ENDS FOR EXPANSSION OF FLOORING.
- AS THIS IS A FLOATING FLOOR ( **NO GLUE OR NAIL HAS TO BE DONE ON THE FLOOR** ). PROFILES SHOULD NOT BE SCREWED OR NAILED ON THE S.P.C FLOOR AND IT SHOULD NOT PREVENT THE FLOOR FROM FLOATING.
- **NO HEAVY FURNITURE HAS TO PLACED ABOVE THE FLOOR WHICH MAY AVOID THE FLOOR FORM EXPANTION. PLACE ALL LOOSE FURNITURE BEFORE INSTALLTION AND THEN INSTALL THE FLOORS USE PROFILES TO FINSIH THE ENDS OF THE FLOOR.**
- **THERE IS NO NEED TO USE LOOSE FOAM FOR 5MM AS IXPE IS ALREADY BEEN PASTED ON THE FLOOR.**
- ACCLIMATION IS NORMALLY NOT NECESSARY BUT MAY BE NECESSSARY IN EXTREME CLIMATE CONDITIONS.
- **KINDLY FOLLOW THE ABOVE BASIC POINTS TO GET THE BEST REASULTS. NON COMPLIENCE OF THE AOVE MAY VIOD OF ANY WARRENTY FOR THE PRODUCT.**
- KINDLY CONTACT YOUR VENDOR FOR FURTHER CLARIFICATIONS.

**S.P.C. फ्लोरिंग के इन्स्टोलेशन की गाईडलाईनस् है यह ।**

**एसपीसी फ्लोरिंग की स्थापना से पहले निर्देशों को ध्यान से पढ़ें ।**

- इन्स्टालेशन से पहले 100% फ्लैट फ्लोर होना जरूरी है । कोई लहर या धूल के कण फर्श पर नहीं छोड़े जाने चाहिए । सर्वोत्तम परिणामों के लिए प्रमाणित टाइल्स या मार्बल या स्पोर्ट्स स्टाइल्स पर इन्स्टाल करें । कंक्रीट के फर्श या खुरदरे फर्श पर स्थापना से बचें ।
- स्थापना से पहले फर्श पर कोई नमी या पानी नहीं छोड़ा जाना चाहिए ।
- फर्श के विस्तार के लिए कम से कम 8 एमएम विस्तार अंतराल को सभी छोरों पर छोड़ा जाना चाहिए ।
- जैसा कि यह एक तैरता हुआ फर्श है (फर्श पर कोई गोंद या कील नहीं लगानी है) प्रोफाइल को एसपीसी फर्श पर स्क्रू या कील से नहीं लगाया जाना चाहिए और यह फर्श को तैरने से नहीं रोकना चाहिए ।
- फर्श के ऊपर कोई भारी फर्नीचर नहीं रखना चाहिए जिससे फर्श का विस्तार न हो । स्थापना से पहले सभी ढीले फर्नीचर रखें और फिर फर्श को स्थापित करें, फर्श के सिरों को खत्म करने के लिए प्रोफाइल का उपयोग करें ।
- 5 एमएम के लिए ढीले फोम का उपयोग करने की कोई आवश्यकता नहीं है क्योंकि **IMPEX** को एसपीसी फ्लोरिंग पर पहले ही चिपकाया जा चुका है ।
- जलवायु परिवर्तन आमतौर पर आवश्यक नहीं है लेकिन चरम जलवायु परिस्थितियों में आवश्यक हो सकता है ।
- **सर्वोत्तम परिणाम प्राप्त करने के लिए कृपया उपरोक्त बुनियादी बिंदुओं का पालन करें । उत्पाद के लिए किसी भी वारंटी के ऊपर मर्ई का अनुपालन नहीं करना ।**
- अधिक जानकारी के लिए कृपया अपने दुकानदार से संपर्क करें ।





FLOOR DECOR SOLUTIONS

S.P.C. | LAMINATE | VINYL FLOORINGS

**K2**<sup>®</sup>  
**IMPEX**

MUMBAI • NEW DELHI

# RIGID CORE VINYL (SPC) FLOORING

THICKNESS  
4.0mm | 5.0mm

+91-7208006867

[www.k2impex.in](http://www.k2impex.in)

[marketing@k2impex.in](mailto:marketing@k2impex.in)